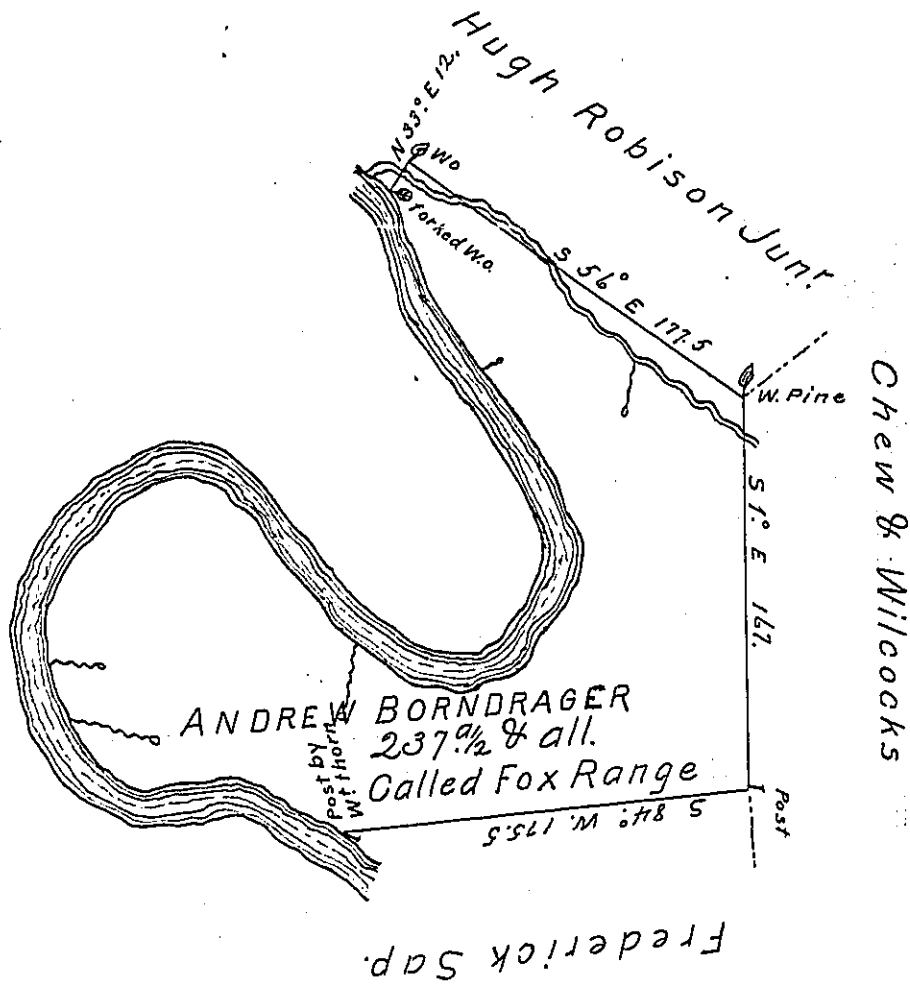


Courses and Distances down  
the River from Post by Whitethorn  
on the Bank are as followeth

- N. 67° W 57. P<sup>r</sup>
- S 80° W 32.
- N 51° W 46.
- N 19° W 42.
- N 31° E 48.
- N 51° E 31.
- S 87° E 19.
- S 49° E 129.
- N 80° E 34.
- N 32° E 67.
- N 32° W 118
- N 22° W 56.5 to  
a forked Wo. on  
Bank near and  
the Mouth of  
above a small  
Run



Situated on the East side of Little Yough River  
in Brothers Valley Township Bedford County and  
Surveyed the 25<sup>th</sup> Day of March 1785. In pursuance  
of a Warrant Dated the 17<sup>th</sup> Day of January 1785. —

To John Lukens Esq. } for Alexander Mc Cleand O.S.  
Surveyor General } Thomas Vickroy

IN TESTIMONY that the above is a copy of the original remaining on file in  
the Department of Internal Affairs of Pennsylvania, made  
conformably to an Act of Assembly approved the 16th day of  
February, 1833, I have hereunto set my Hand and caused  
the Seal of said Department to be affixed at Harrisburg,  
this second day of November 1903,

*Jane R. Brown*  
Secretary of Internal Affairs.